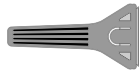


Window film requires handling with great care. Creases and folding must be avoided and application must be carried out in a draught and dust free situation. Only apply the film to smooth glass. Only apply when outside temperature is above 0c. Avoid application in full sun.

Cleaning and preparation of the glass are of vital importance and care must be taken to flush any dirt particles out of the glass and window frame. Remove any paint ingress on the glass, as the film will not stick to it.

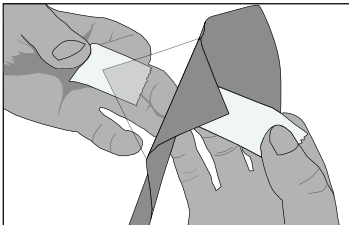
1 | WINDOW PREPARATION

1. Make up a slip solution in a spray bottle by adding a squirt of washing up liquid to water.
2. Thoroughly clean the glass with the solution. Use a window scraper to remove any specks of paint or other foreign matter. Make sure the glass is wet when using the scraper so that you don't scratch the glass.
3. Squeegee dry.



2 | FILM HANDLING

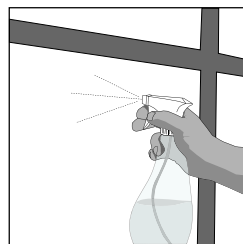
1. The adhesive side of the film is protected by a clear liner.
2. Cut the film to an approximate size with a pair of scissors, allowing 2 cm extra for the width and length. You can trim the excess material after installation.



Note: Separate a corner of the window film and liner with 2 small pieces of adhesive tape on either side of the product.

3 | FILM APPLICATION

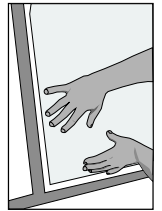
1. Thoroughly wet the glass with the solution.
2. Place the film on a flat surface with the clear liner facing you. From the ready separated corner, carefully peel off the liner and spray the adhesive surface liberally with the solution as you go along. This will prevent the film from sticking to itself. Alternatively, get a helper to hold the film at arms length, and remove the protective liner whilst spraying the adhesive side of the film.



3. Carefully reverse the film on to the glass so that the adhesive side is now in contact with the glass. The factory edge should be butted against the frame.

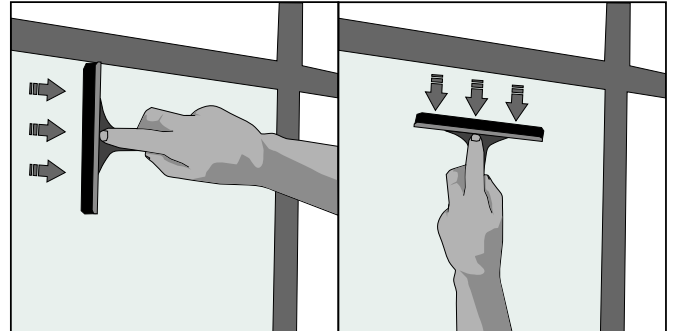
Note: Keep the film straight and do not allow to curl up on itself or wrinkle to avoid creasing.

4. Position the film by gently sliding it on the wet surface and smoothing out large air bubbles with the palm of your hand. Ensure the whole glass area is covered by film.



4 | SQUEEGEE TECHNIQUE

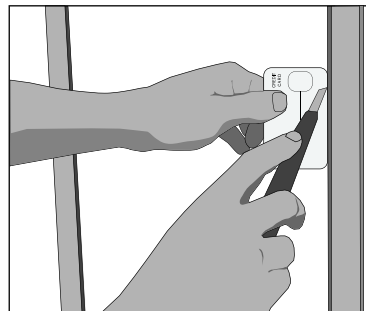
1. Wet the face of the film with the solution and use a rubber squeegee to squeeze out all the solution. Start horizontally at the top from the middle out.
2. Squeegee downwards down the middle of the film.
3. Squeegee across to the edges of the film
4. Make sure that all the solution has been squeezed out from under the film. Repeat squeegee process if necessary.



Note: If a particle is trapped behind the film, carefully lift the film from the nearest corner and remove the particle. Wet the adhesive side of the film again, drop the film back in position, wet the face of the film and re-squeegee.

5 | FILM TRIMMING

1. Run a credit card and a Stanley knife down the edge of the glass frame. You will trap the knife blade between the credit card and the frame. This should avoid any slip ups.
2. Remove the excess material.
3. Repeat entire squeegee procedure. A firm pressure is necessary to effect a strong bond.



6 | FINAL CHECKS

1. Wipe any water remains dry with some paper towel.
2. Inspect the film for any trapped water or air bubbles and squeeze out.

Note:

During drying time, some haziness will be evident and this will disappear and dry out over a 2-4 week period. To clean the film after installation, use mild soapy water and a squeegee. Avoid using abrasive material as it will scratch the film.

Feel free to contact us should you have any further queries on 020 8961 7337.

Important note: Seller's and manufacturer's only obligation shall be to replace such quantity of the product proved to be defective. Neither seller nor manufacturer shall be liable for any injury, loss or damage, direct or consequential, arising out of the use of or the inability to use the product.